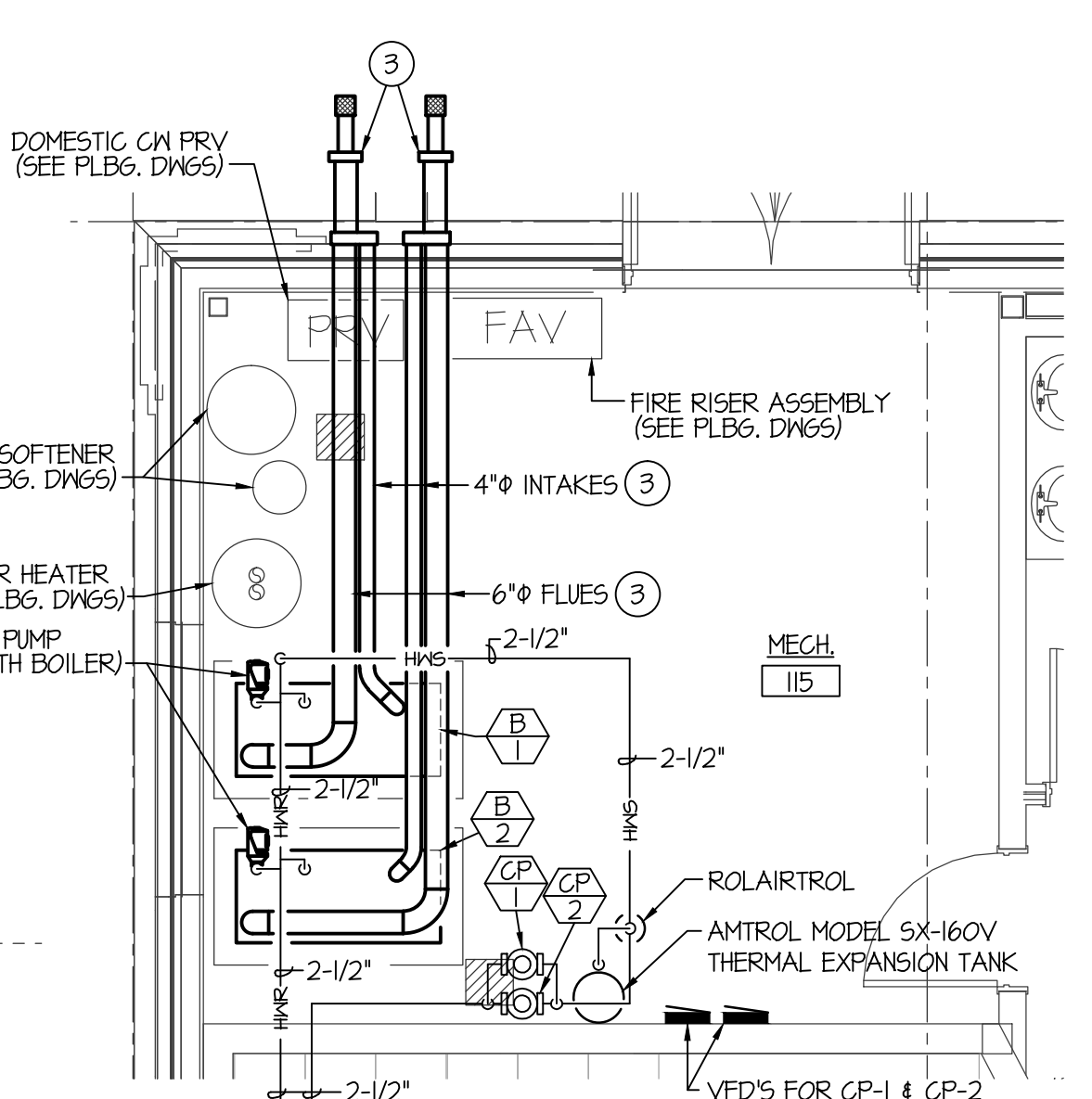


MAIN FLOOR - MECH. PIPING PLAN
SCALE: 1/8" = 1'-0"



LARGE SCALE MECHANICAL ROOM 115 MECHANICAL PIPING PLAN
SCALE: 1/4" = 1'-0"



SEE LARGE SCALE MECHANICAL ROOM PLAN ON THIS SHEET FOR MECH. EQUIPMENT AND PIPING LOCATED IN THIS AREA.

PLAN NOTES:

- 1 RISE 1-1/4" HWS AND HNR PIPING UP IN CHASE TO UPPER LEVEL CEILING SPACE ABOVE. SEE SHEET M201 FOR CONTINUATION OF PIPING.
- 2 RISE 1-1/2" HWS AND HNR PIPING UP IN CHASE TO UPPER LEVEL CEILING SPACE ABOVE. SEE SHEET M201 FOR CONTINUATION OF PIPING.
- 3 RUN FLUES ACROSS IN MECHANICAL ROOM AND TERMINATE WITH HORIZONTAL VENT TERMINATION ASSEMBLY AT 11'-0" A.F.F. SEE DETAIL ON SHEET M201.

SHEET TITLE:
MAIN LEVEL MECHANICAL PIPING PLAN

CONTRACTOR SHALL VERIFY ALL DIMENSIONS & CONDITIONS SHOWN OR IMPLIED.

DRAWING SCALE APPLIES TO 22' X 34" SHEET SIZE

REVISION	DATE

DRAWN BY:	GR
CHECKED BY:	DCS
JOB NUMBER:	46548-13B
PROJECT DATE:	FEB. 2020
SHEET OF:	
ES&A JOB NUMBER:	18080

ORIGINAL DRAWING SIGNED BY: DWAYNE C. SUDWEEKS
 DATE ORIGINAL SIGNED: FEB. 14, 2020
 ORIGINAL ON FILE AT ENGINEERED SYSTEMS ASSOCIATES
 1355 EAST CENTER, POCATELLO, IDAHO 83201

Engineered Systems Associates
 1355 EAST CENTER
 POCATELLO, IDAHO 83201
 PHONE: (208) 233-0501
 FAX: (208) 233-0529
 EMAIL: eso@engsystems.com

PROFESSIONAL ENGINEER
 REGISTERED
 5762
 STATE OF IDAHO
 DWAYNE C. SUDWEEKS

ES&A JOB NUMBER: 18080